

# The Road To Amalgamation

Port Hope / Cobourg

Public Information

December 10<sup>th</sup> and 11<sup>th</sup>, 2014

# Amalgamation Committee

- Matt McKeen – Co-Chair- Cobourg
- Shawn Kelly – Co-Chair – Port Hope
- Fraser Adamson – Cobourg
- Sarah Roche – Port Hope
- Michael Dahle – Port Hope
- Phil Beatty – President CCHL
- Christian Eriksson – President BAA
- Contact: nmhainfo@gmail.com

# Guiding Principals of the Committee

- To facilitate the Amalgamation of Port Hope Minor Hockey and Cobourg Minor Hockey
- To create a cohesive new hockey Association that will allow hockey to thrive in both communities
- To provide the opportunity for players to compete at the appropriate skill and age level to maximize their hockey opportunities

# Guiding Principals of the Committee

- To broaden skill development at the House League and Rep levels for coaches and players alike
- Promote an environment that fosters volunteerism at the Executive, Coach and Parent level
- To honour historic facility usage commitments that have existed with the two municipalities

# Guiding Principals of the Committee

- To explore and pursue the feasibility of higher level representative hockey and create MORE opportunities at various levels
- To encourage a balance of responsibility for the new Organization across the Executive and Coach levels
- Work on the basis of consensus that embraces the guiding principals

# What happens if we Stay the Same?

- Youth population in the two communities continues to decline impacting hockey registration
- Players in each center must continue to go elsewhere for higher competition as NRP players (A/AA)
- Potentially fewer Teams, lose Major/Minor, lose AE option

# Declining Opportunities

- Since 2012/13 (the last amalgamation vote), the BAA has lost the following teams:

## **Rep Level:**

- Major and Minor Midget, Bantam A/E, Novice A/E

## **House League**

- HL teams fewer players per team at the lower levels.
- **In Port Hope the prediction of fewer teams has been proven correct.**
- In Cobourg the decline has been mitigated by an influx of players from adjacent organizations.
- No Cobourg AE level teams this season

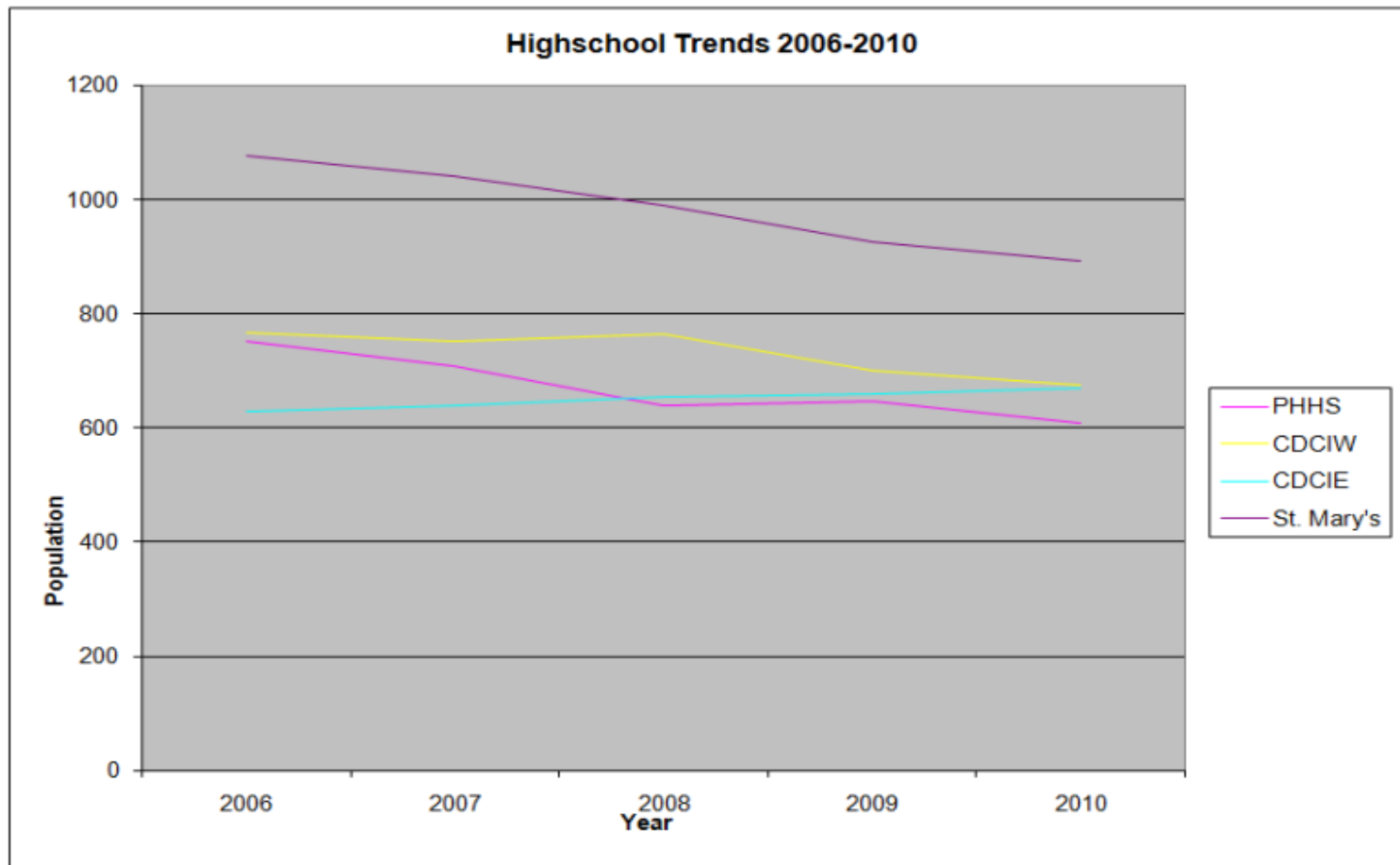
# Overall High School Enrollment

High School	Port Hope	Cobourg East	Cobourg West	St. Mary's
2006	750	620	750	1100
2010	600	640	650	900
2014	418	780	380	754

**Total Decrease in High School Enrollment from 2006-2014: 888 students**



# High School Trends



# Northumberland County

## Population Change 2001 – 2011

### 5 – 19 year olds\*

	2001	2011	Difference	% Difference
5-19 year old	16,310	13,470	- 2,840	- 17.4%
Total Population	77,500	82,126	+ 4,626	+ 5.6%
Median Age	41.1	48.3	+ 7.2	
% over 15 years old	81.2	86.0	+ 4.8	

\* Source Stats Canada

# Northumberland Minor Hockey Association

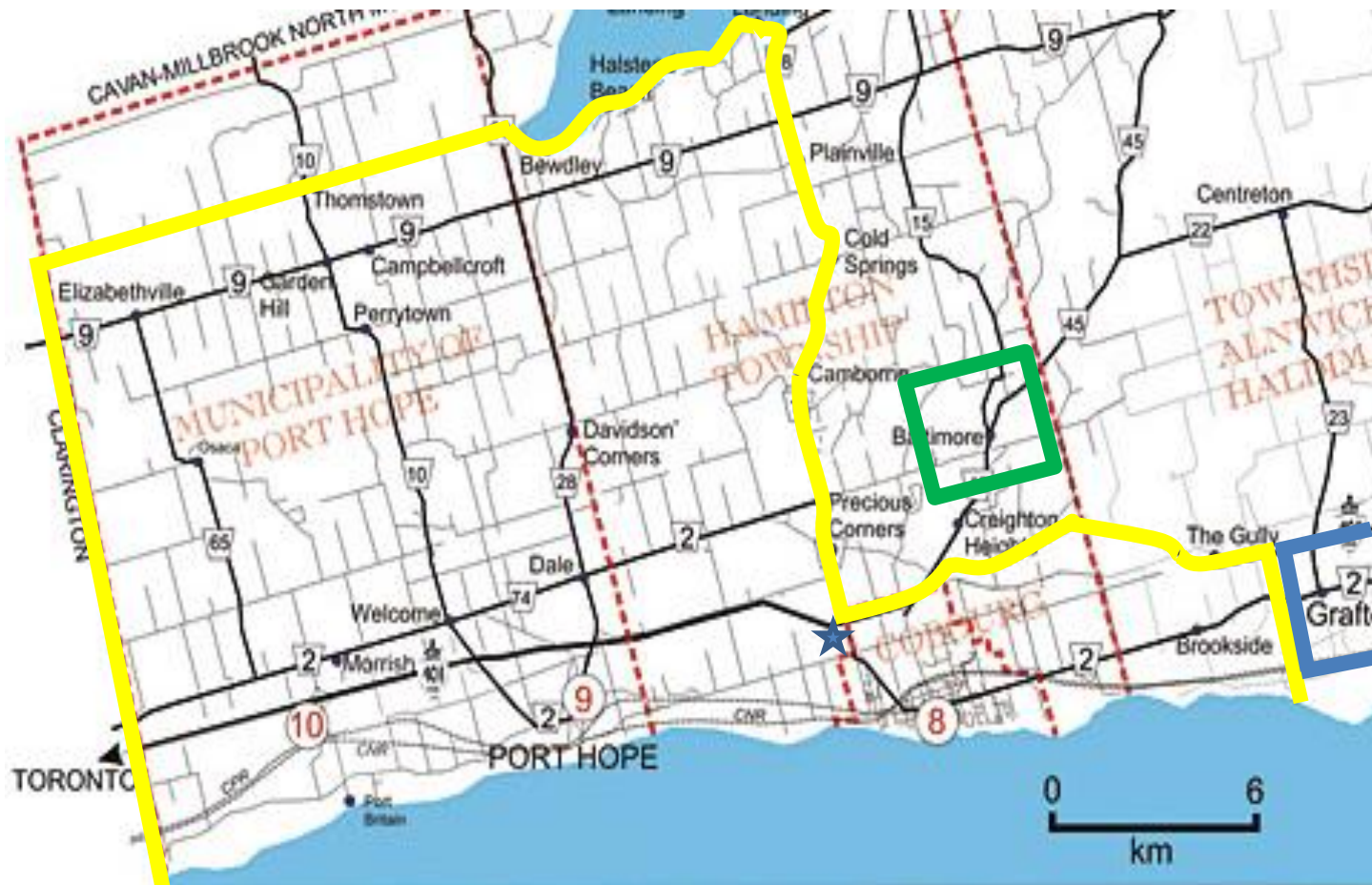
# The Business of Hockey

- The Corporate Head Office is the Cobourg Community Centre
- The hockey CENTRE for OMHA reference point is: Northumberland Hills Hospital

The Corporate Name of the New Association is Northumberland Minor Hockey Association

- The recommended geographic Boundary (subject to OMHA approval) is shown on next slide

# Proposed New Boundary



New Organization Center Point  
Northumberland Hills Hospital  
1000 DePalma Drive, Cobourg, ON K9A  
5W6

# Our Proposal to the OMHA – to be confirmed by OMHA

- The committee has applied to the OMHA to be 'A' at the Rep level. Our REM supports this however the OMHA is looking a "AA" classification.
- Level to be confirmed at upcoming OMHA meeting before we vote on amalgamation.
- The A/E level will be "A/E 1 or 2" (as currently played by Cobourg), not "A/E 3-5" (as currently played by Port Hope)
- The new centre will be able to support A and AE teams at the major and minor levels

# Structure at the Rep Level

'A' teams at Major and Minor

AE teams at Major and Minor

Novice A/E

MD7 Team

IP6 Select Team (if numbers warrant)

Possible addition of Juvenile Team (18 & 19 year olds)

# Current Rep Players from both centers

## Projected for 2015-16

Team	Birth Year	# of Local Players	NRP's	A/AA	AE
Novice	2007	17		17	?
M. Atom	2006	30		15	15
Atom	2005	31		16	15
M. Pee wee	2004	28	3	17	14
Pee wee	2003	27	3	17	13
M. Bantam	2002	31	3	17	17
Bantam	2001	22	3	14	11
M. Midget	2000	26	3	16	13
Midget	1998	18 10	3	17	14



# Rep Hockey

- Coaches for both the 'A' and 'AE' teams will be picked in the Spring.

The proposed selection committee will consist of an executive from each centre along with three individuals who are external to both associations.

The executives from each centre will not have vote but will be able to provide input on the applicants.

- NRP's from outside of NMHA Area will be eligible to try-out at Rep level (minor Peewee and above)
- Try-outs would occur in the late summer of 2014

# Rep Hockey

- All teams will practice/play across the 5 municipal rinks. No team or age group will be assigned to any specific rink
- New Logo and Colours will be chosen and new sweaters bought and paid for by new Association

# AAA Affiliation

- AAA affiliation will remain the same unless OMHA states otherwise. Current AAA players would be Grandfathered to their current center.
- Port Hope residents will continue to go to Clarington
- Cobourg residents will continue to go to Quinte

# What happens at House League?

- Port Hope and Cobourg players will be blended, evaluated and divided into the pool of house league teams
- Games and practices will be divided among the available arenas
- House League will be able to offer a competitive Select Team at each age group
- There will be one VP House League and 8 Governors to manage the divisions.

# House League

- Logos will reflect the new amalgamated organization
- Jerseys will be replaced as required.
- All teams will practice/play across the 5 municipal rinks
- The cost of hockey will be blended between each community

# Finances

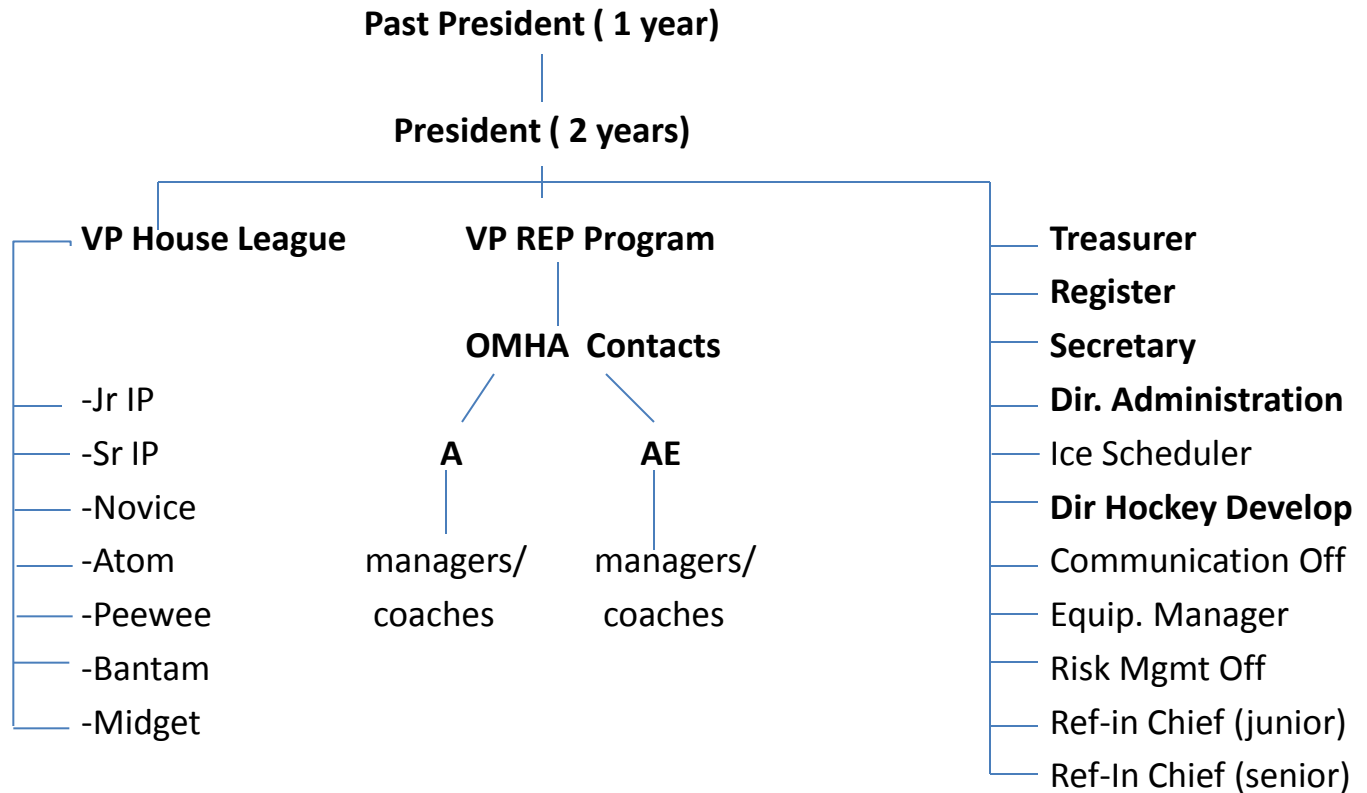
- Both centers have a positive financial position
- Neither have any significant debts/contracts/obligations that would be a burden under the new association
- A cost of amalgamation will be calculated and shared equally by both association
- Any remaining assets will be blended and become the financial base for the new organization

# Cost of Hockey

## Base Cost (House League)

Age Group	Port Hope	Cobourg
IP	\$350	\$415
Novice	\$450	\$415
Atom	\$450	\$465
Peewee	\$450	\$465
Bantam	\$450	\$500
Midget	\$450	\$500 Cobourg has \$50 fundraising fee

# The Executive





# Rep Hockey Name & Jersey

NORTHUMBERLAND

???

---

- The logo name will be determined by a contest following amalgamation vote.  
Jersey colours still to be determined within the context of the Lakeshore League

# Next Steps/ Items to be Reviewed

- New Constitution
- Initial Budget to establish new corporation
- Framework for amalgamation transition to new Executive

# Next Steps/Upcoming Consultation

- Comment sheets available – available at back
- Email Address – [nmhainfo@gmail.com](mailto:nmhainfo@gmail.com)
- Continual Updates on Local Hockey centre websites
- Next Public Meetings

# Amalgamation Vote

- Each centre holds own vote as per their constitution with regards to voter eligibility
- In order for Amalgamation to be successful each community must endorse the proposal by a minimum of a TWO-THIRDS majority in favour
- **Voting Day : Sat., January 31<sup>st</sup> 2015.**  
Possible to have a 2 day vote

# Where to Vote

Cobourg Members – To Be  
Determined

Port Hope Members – To Be  
Determined

# The Question

- Do you support the amalgamation of the Cobourg Community Hockey League and Port Hope Minor Hockey to form the Northumberland Minor Hockey Association?



Yes



No

# If the Amalgamation vote is successful:

- Who will be the interim Executive?
  - The current Amalgamation Committee will oversee the operation of the new Association until both current associations are dissolved at the end of May.
  - In June a new executive will be voted in.

Amalgamation

Questions?